

# INTERMIXABLE PRODUCTS

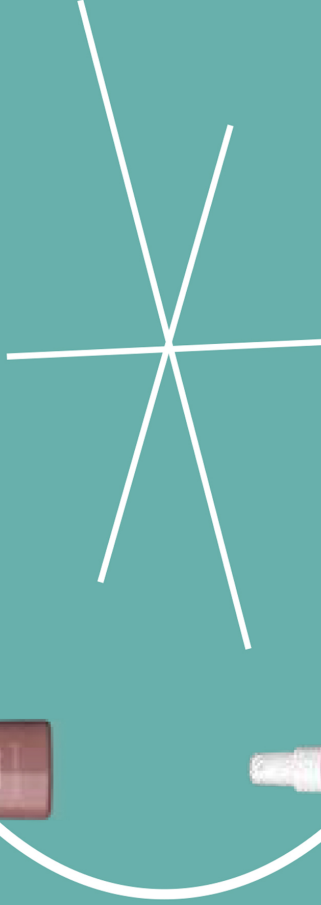
Personalize Your Preferred Curl Structure & Support



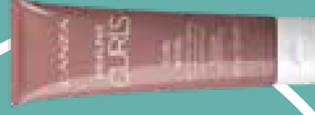
**CURL THERAPY**  
Detangles, Hydrates & Strengthens



**CURL RESTORE**  
Intense Moisture, Softness & Shine



**CURL BOOST**  
Adds Texture, Springiness & Bounce



**CURL WHIRL**  
Softer Support, Pliable Hold & Frizz-Free Shine



**CURL FLEX**  
Stronger Support, Hold & Maximum Curl Retention